



METZ MÉTROPOLE
HARMONY PARK | 11 bd Solidarité
BP 55025 | 57071 METZ CEDEX 3
T. 03 87 20 10 00
F. 03 87 20 10 29
metzmetropole.fr



metz métropole

Welcome to our ecosystem

44
communes

230 000
inhabitants

.....

AMANVILLERS
ARS-LAQUENEXY
ARS-SUR-MOSELLE
AUGNY
CHÂTEL-SAINT-GERMAIN
CHESNY
CHIEULLES
COIN-LÈS-CUVRY
COIN-SUR-SEILLE
CUVRY
FÉY
GRAVELOTTE
JURY
JUSSY
LA MAXE
LAQUENEXY
LE BAN-SAINT-MARTIN
LESSY
LONGEVILLE-LÈS-METZ
LORRY-LÈS-METZ
MARIEULLES-VEZON
MARLY
MÉCLEUVES
METZ
MEY
MONTIGNY-LÈS-METZ
MOULINS-LÈS-METZ
NOISSEVILLE
NOUILLY
PELTRE
PLAPPEVILLE
POUILLY
POURNOY-LA-CHÉTIVE
ROZÉRIEULLES
SAINT-JULIEN-LÈS-METZ
SAINT-PRIVAT-LA-MONTAGNE
SAINTE-RUFFINE
SAULNY
SCY-CHAZELLES
VANTOUX
VANY
VAUX
VERNÉVILLE
WOIPPY

metz
métropole

Welcome to our ecosystem

6 The greatest
asset of metz
.....
7 métropole is its
convergences



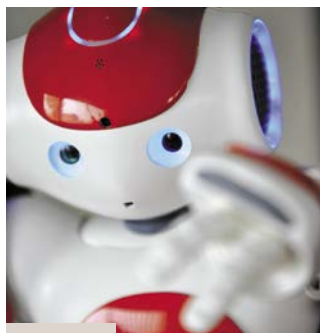
8 Two thousand
.....
9 years of
character

contents



10 Laboratory
.....
13 of human
ecology

14 Surprise
.....
17 and enrich



18 The challenge
.....
21 of intelligence



22 Valued
.....
25 heritage
of work

Photo/illustration credits: Randy Agostini/Kevin Alexandre Kazek ; Arsenal de Metz; Yann Arthus-Bertrand; Luc Bertau; Bibliothèques-Médiathèques de Metz; Alain Biendicho; Williams Bonbon; Nicolas Bram; Florian Burger; Pauline Cavion; Centre Pompidou-Metz © Shigeru Ban Architects Europe and Jean de Gastines Architectes, with Philip Gumuchdjian for design of competition-winning project /Metz Métropole/Centre Pompidou-Metz; Hervé Colson; Agences CNB & GHA; DEIS/Philippe Starck; Dynamo Associés; Eiffage Construction Lorraine/Wilmotte & Associés; Explorations Architecture; Fabrique d'Images; Fly-Pixel; Frac Lorraine; Philippe Gisselbrecht; David Hourt; Arnaud Hussenot/Fabien Darley; Inspire Metz; Bertrand Jamot; Christian Legay; Jean Munin; SNCF; Supélec; Jean-Paul Viguiet et Associés, Architecture et Urbanisme; Ville de Metz.
Production : Direction de la Communication de Metz Métropole.
Graphics: Christophe Ferry.
Text: Pierre Feisthauer ; Elise Cordonnier.

edito



Jean-Luc BOHL
President of Metz Métropole
Mayor of Montigny-lès-Metz
First Vice-President
of the Région Grand Est

Do you expect Metz Métropole to be grey, wintry and industrial? Then you are in for a big surprise. Beneath its apparent reserve, this city harbours some remarkable treasures which are waiting only for you to take the first step. You may well find that you become attached to this child of the borderlands, at the crossroads between North and South.

This is a city with a huge variety of influences, which can be felt wherever you go. The languages, sounds, philosophies, traditions and dreams of old Europe are still to be found here on the banks of the River Moselle.

It is no coincidence that this is where Robert Schuman drew his inspiration for Franco-German reconciliation and European unification. Come and experience the simplicity and authenticity of the inhabitants' connection to their land and to their guests. They are generous and approachable. But they are also honest and pragmatic. And they love to keep their promises!

With the Centre Pompidou-Metz, French Tech East accreditation and the flagship BLIIDA building, the Amphithéâtre District and – most recently – the Constellations Festival, it's clear that our region has chosen the path of regeneration. And the bold conversion of the Frescaty Plateau is proof that we are finally drawing a line under our legendary military traditions.

Metz Métropole is a land that is full of life, a natural place of convergence or transit, of continuous movement. A land of experience, curious, always on the lookout for an original and innovative path. Its own path.

The greatest asset of metz métropole is **its convergences**



Metz Métropole has a unique geographical location,
only a stone's throw from the borders of Germany,
Luxembourg and Belgium.



Nestled between the Rhine, the Seine, the Rhône and the North Sea, this region has long been fuelled by the major trading routes and ideas of old Europe. Lying on the edge of two different worlds, it draws its identity and energy from these borders, which have both divided and united the lands over the centuries.

As a result, Metz Métropole has developed its own unique way of life, to which its inhabitants are deeply attached. A remarkable urban heri-

tage and a string of ancient villages clinging to the banks of the Moselle. A southern ambiance arising from the golden limestone of Jaumont. A keen commercial vibrancy.

A distinct local law which governs everyday life, the legacy of Metz's great cultural leapfrogging through the centuries. The pleasures of the table, with mirabelle plums and AOC wines. And an artistic enthusiasm perfectly embodied by the great white sail of Centre Pompidou-Metz.



1. River Moselle and Mont Saint-Quentin at Longeville-lès-Metz
2. Aerial view of the old town of Metz
3. Rue Serpenoise is the main commercial thoroughfare in Metz
4. VAOC Moselle vineyard
5. Mirabelle plums. The iconic fruit of the Metz region
6. Place Saint-Jacques in the heart of Metz's historic pedestrianised centre
7. Students at Georgia Tech



Shaped by a history of exchanges and horizons, Metz Métropole is also a land of work, the descendant of merchant traders and adventurous industrialists. Metz loves initiative and innovation.

A land of memory which cultivates humility and effort as the values of the future.



Metz Métropole draws its identity and energy from its borders



Two thousand years of character

1. Gallo-Roman aqueduct at Ars-sur-Moselle
2. Metz Cathedral and the golden limestone of Jaumont
3. Marquis de Lafayette. From Metz to America
4. Universal Exhibition of Metz (1861)
5. The Governor's Palace is testament to the German period (1871-1918)
6. The home of Robert Schuman in Scy-Chazelles
7. At the Centre Pompidou-Metz



PAX ROMANA

Julius Caesar invaded Gaul in 42 B.C. The native Celtic peoples, the Mediomatrici, were drawn into the embrace of the Pax Romana. The capital of **Divodurum** (Metz) was one of the most thriving cities north of the Alps.

BIRTHPLACE OF THE CAROLINGIANS

Once the wealthy capital of the Merovingian kingdom of Austrasia, Metz (then known as *Mettis*) became the **birthplace of the family of Charlemagne**. The emperor went on to bestow the city with many gifts.

LONG LIVE THE REPUBLIC... OF METZ!

The **Messin Republic** enjoyed **autonomy within the German Empire** throughout the Middle Ages. The strong ties which unite the city and its surrounding area were formed during this golden age.

DESTINY WITH FRANCE

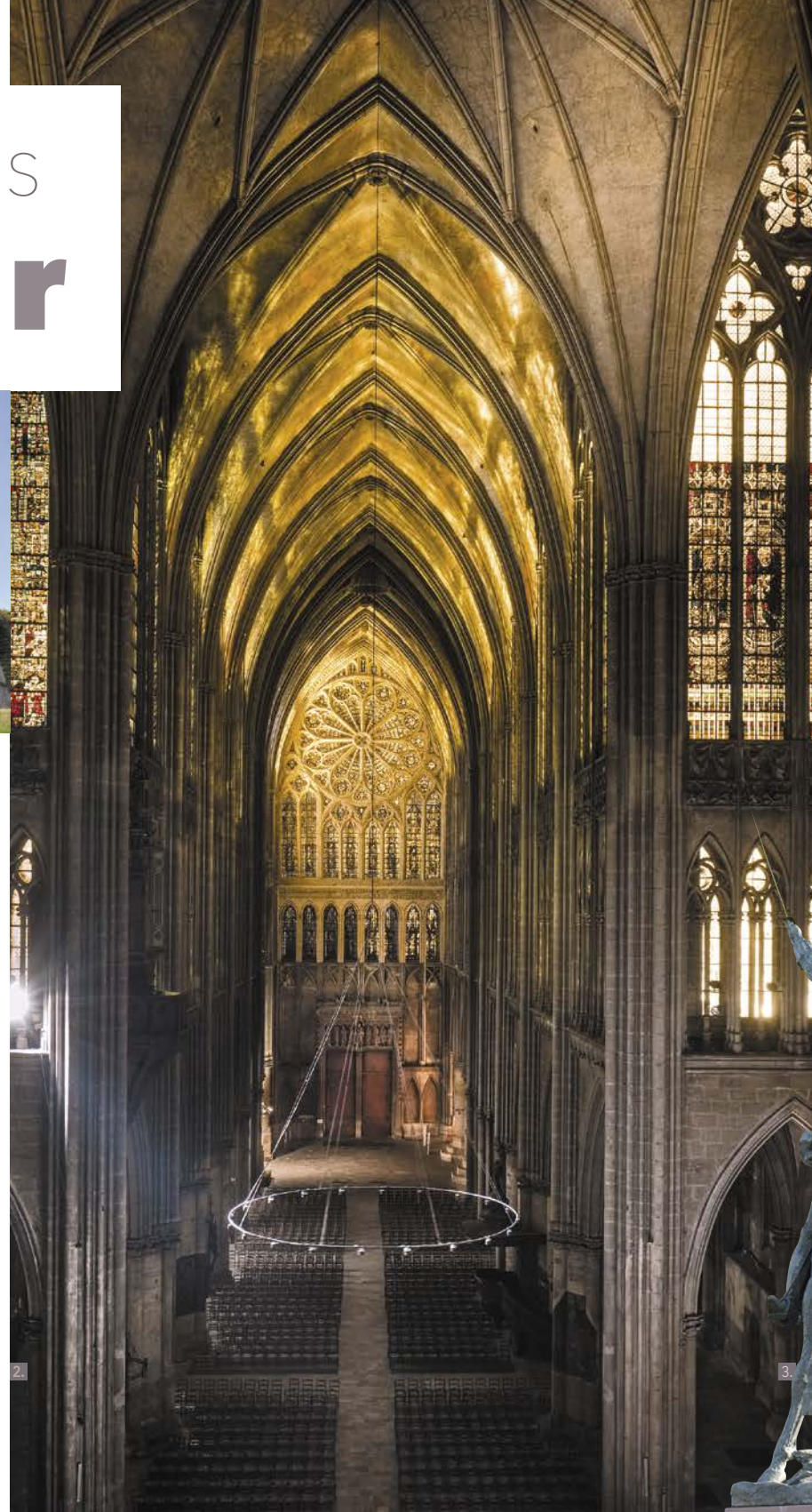
During the Renaissance, Henry II, King of France, brought the region under the French influence. From this time forth, **“Metz defends France”**, as Vauban would state soon after.

PRO AMERICA!

The young Marquis de **La Fayette** fell in love with the cause of the American insurgents at a dinner on 8 August 1775. Thus began his long journey which would end only with **American Independence**.

UNIVERSAL EXHIBITION

After London, New York and Paris, the **4th Universal Exhibition was held in Metz**. The city highlighted its economic and industrial expertise.



“Metz Métropole, a fusion of major European cultures”



NEW GERMAN CHAPTER

Following the war against Prussia, France conceded Alsace and Moselle to the young German Empire. This annexation would last almost 50 years. **Emperor Wilhelm II chose to turn Metz into a showcase for the Empire.**

RECONCILIATION

Barely five years after the Second World War, **Robert Schuman** implemented his plan for reconciliation between France and Germany. The father of Europe mulled over his project in his home in Scy-Chazelles.

HIGH VELOCITY

In 2007, the **TGV arrived in Metz**, placing the city within 1 hour 20 minutes of Paris.

THE WORLD ARRIVES IN METZ

The **Centre Pompidou-Metz** is dedicated to modern and contemporary art. This was the first decentralised branch of a major French national museum.

Laboratory of Human ecology

Spacious and dynamic, bright and harmonious, Metz Métropole is evolving within an exceptional environment, where a true urban philosophy is thriving. The city is strengthened by its age-old ties with rural culture. And because it is deeply attached to this quality of life, Metz is rising to the challenge of responsible and sustainable development.

.....

INVENTORY OF THE CENTURIES

As you travel around the city of Metz, you will discover reflections of the cultures and civilisations which have shaped the land over the centuries, from the Gallo-Romans to the Centre Pompidou-Metz. More than twenty centuries of encounters are embodied in the stones of this city.

The legacy of the Italian bankers of the Middle Ages, the well-proportioned French squares of the Age of Enlightenment, the architectural encyclopaedia of the German Imperial Quarter... and a fantastic cathedral at its heart. Metz Métropole is a fusion of urban experiences, enriched by the nearby charm of ancient wine-producing villages along the banks of the Moselle and the expansive agricultural terrain of the Lorraine Plateau.



1. Vaux is a pearl hidden amidst the vineyards of Moselle
2. Composting is shared in Montigny-lès-Metz
3. Baroque Abbey of Saint Clément in Metz
4. Avenue Foch. Architectural encyclopaedia of the Belle Époque
5. The Botanical Garden of Metz
6. Soft modes at the heart of the metropolitan travel project

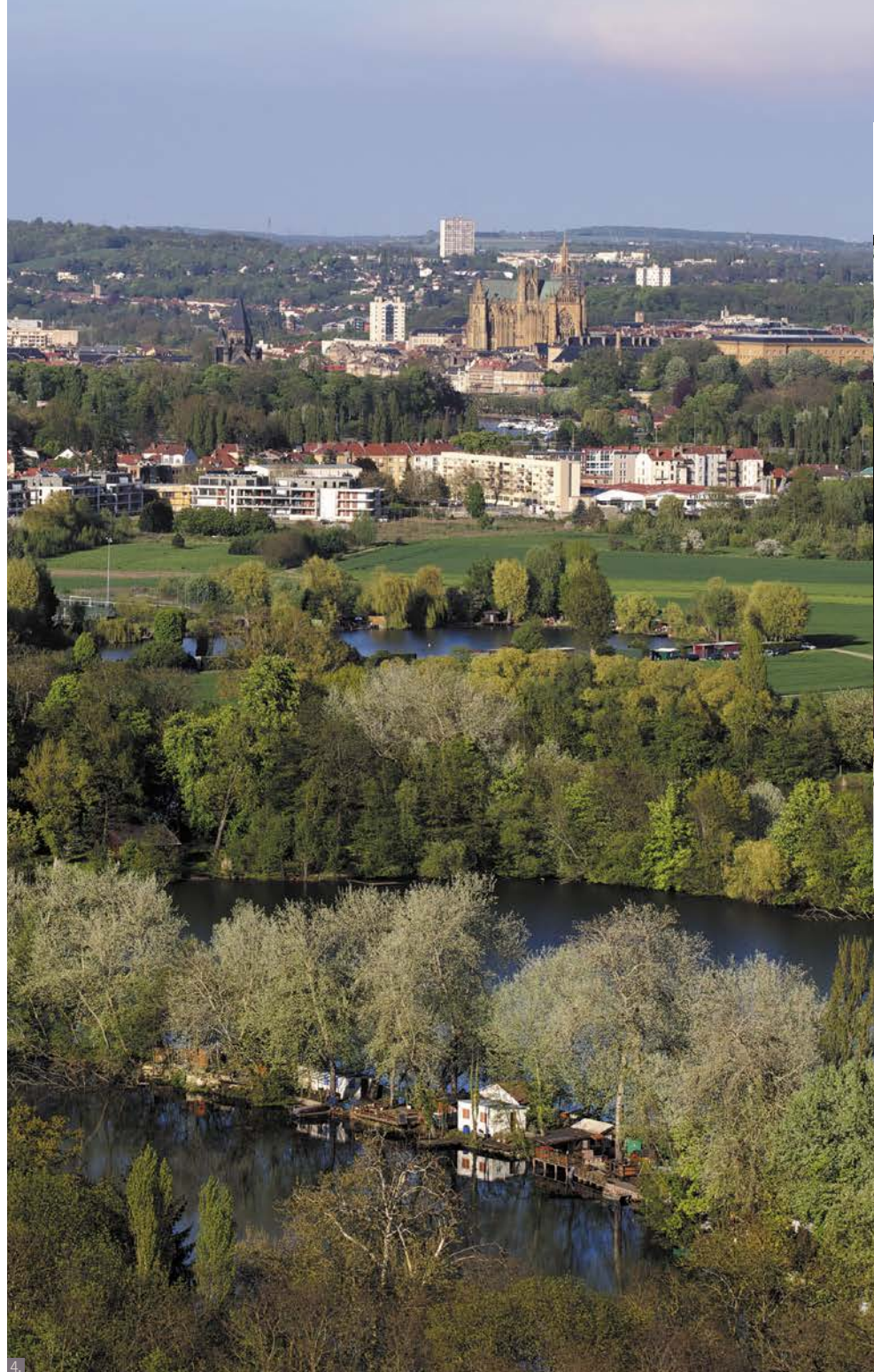




METZ MÉTROPOLE BREATHES FREELY IN THE OPEN AIR

The inhabitants of the city are proud of its large open spaces. Nature emerges in gardens, parks and watery expanses, penetrating into the very heart of a city which gave birth to urban ecology.

But nature is also found in vast, fertile and preserved spaces, such as the large forested areas beside the Moselle or the watery ribbons of the Moselle and the Seille. Propagating a relaxed idea of time, ideal for relaxation, conviviality and tranquillity.



“METTIS, is one of the most innovative and modern forms of public transport in Europe”

GENERATION METTIS

Because the notion of urban equilibrium is a great opportunity for the present and the future, Metz Métropole is reinventing its ways of getting around, connecting districts and villages, inhabitants and visitors.

This revolution has a name: **METTIS**. This high-quality regional bus service is based on two comfortable and efficient bus routes, simultaneously placing the emphasis on other non-motorised modes of transport. These 24-metre articulated carriages, equipped with hybrid engines, are one of the most innovative technological and ecological experiences in Europe.

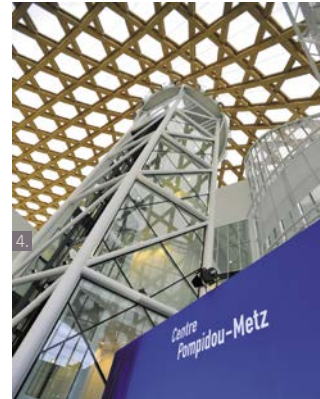
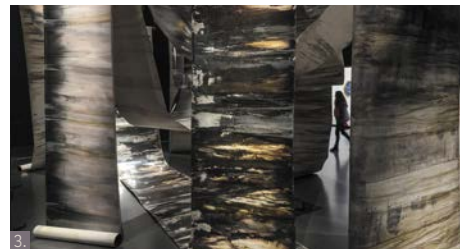


1. The sheep of Mont Saint-Quentin: a machine-less alternative for maintaining our green spaces
2. and 4. Water. The vital ancestral element of the land
3. Agricultural landscape at Coin-sur-Seille
5. et 6. Intermodality lies at the heart of community policy
7. The pop-up garden on Place de la Comédie in Metz

Surprise and **enrich**

In this age-old
place of convergence
for European
civilisations, culture
is the embodiment
of a discerning soul
which loves to amaze
and discover.

.....



THE BEST OF THE PRESENT

Metz Métropole is a capital of modern and contemporary art! The huge success of the Centre Pompidou-Metz, which opened in 2010, is a perfect illustration of the enthusiasm and cultural ambition of a land which loves to surprise and divulge.

This wave of creativity and wonder is supported and enhanced by the FRAC (Regional Fund for Contemporary Art), the École Supérieure d'Art de Lorraine and multiple art galleries.



- 1., 2. and 8. Fascinating array of perspectives offered by the Centre Pompidou-Metz
- 3. The exhibitions *Peindre la Nuit*, *Couples Modernes*, *L'aventure de la Couleur* at the Centre Pompidou-Metz
- 4. The flowing wooden roof designed by Shigeru Ban and Jean de Gastines
- 9. École Supérieure d'Art de Lorraine (ESAL). First-class artistic education
- 10. FRAC Lorraine is another site for the expression of contemporary art



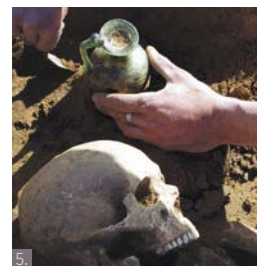
1. and 3. The new entrance to the Musée de La Cour d'Or
2. The *Splendeurs du Christianisme* exhibition
4. and 5. The Preventive Archaeology Centre in Metz Métropole uncovers the history
6. and 8. Splendours of the Opéra-Théâtre de Metz Métropole
7. The Metz Constellations Festival
9. Hugo Becker and Thierry Frémont in *Amadeus*
10. The Arsenal is a temple for the performing arts
11. Conservatoire Gabriel-Pierné.
A major site for artistic learning



ALWAYS FULL OF LIFE!

The culture of Metz Métropole reflects its dynamic history. Firmly attached to its roots in order to better thrive in the contemporary world. The **Opéra-Théâtre** is the classic symbol of this philosophy. The oldest venue currently operating in France, where major works have been performed since

1752 thanks to the passion of creative artists. The city houses an abundance of first-rate institutions, such as the **Arsenal** designed by Ricardo Bofill, the **Conservatoire Gabriel-Pierné** and the **Orchestre National de Metz**. Not to mention the magic of the **Constellations Festival**, that brilliant mix of digital art, music and history.



THE PAST: A PRESENT FOR THE FUTURE

A rich past is not sufficient in its own right. To learn from our past, it must be respected. Metz Métropole works hard to provide a suitable framework in which to present the stories of past generations.

The **Musée de La Cour d'Or** has one of the most spectacular Gallo-Roman and medieval archaeological collec-

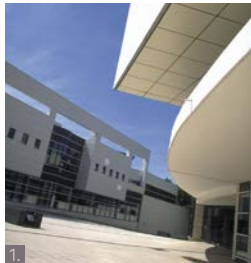
tions in France.

The **Preventive Archaeology Centre** attempts to provide a foundation for the city's long history. Central to this goal, the **Maison de l'Archéologie et du Patrimoine** invites professionals and the wider public to soak up their collective memory.



the challenge of intelligence

- 1. and 2. Saulcy Campus in the heart of Metz
- 3. Bridoux Campus is home to first-year medicine
- 4. Metz Métropole for students
- 5. IPEFAM on Campus Technopôle
- 6. ESITC trains future engineers in construction techniques
- 7. NAO. The intelligent robot born at Supélec Metz
- 8. Lecture hall in Saulcy Campus
- 9. Georgia Tech Lorraine. From Atlanta to Metz



In order to address the major human and economic challenges of the future, Metz Métropole is focusing on the talents of youth, investing in higher education, research and innovation and relying on its expertise and major industrial and geographical potential.

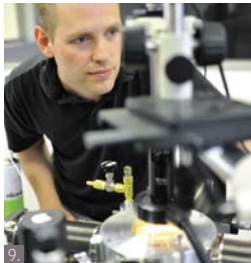
.....



AN ALL-ROUND EDUCATION

The arts, medicine, science, history and languages... Metz Métropole is home to just about every discipline you can imagine. The region boasts two art schools (**ESAL** and **Cefedem**), two universities (the **University of Lorraine** and the US campus of **Georgia Tech Lorraine**), four engineering schools (**ESITC**, **Arts et Métiers ParisTech**, **ENIM** and **CentraleSupélec**) and five technology transfer centres (**Lafayette Institute**, **CEA Tech**, **IRT M2P**, **ImpactE** and **KIT RAW MATTERS**).

These institutions are divided between two campuses: at Saulcy and Bridoux-Technopole technological campus, which plays a pivotal role in the industry of a new era (4.0).





A PASSION FOR MATERIALS

Materials and techniques? Based on its extensive industrial experience, polished by the precision of military engineering, Metz Métropole has inherited substantial expertise in the field of technology. This expertise is passed on to the next generations by **four engineering schools, the laboratories of the University of Lorraine** and by a strong network of entrepreneurs. In 2016, the **Institut de Recherche Technologique**, specialising in innovative materials and metallurgy, will bring together more than 300 industrial and academic researchers in order to respond effectively to the needs of our businesses.



1. Georgia Tech Lorraine is heavily involved in materials research
2. École Nationale d'Ingénieurs de Metz (ENIM) is located in the Metz Technopôle
3. The Metz campus of Arts et Métiers ParisTech
4. Supélec trains engineers in electrical energy and information sciences
5. and 6. Institut Lafayette is a research unit specialising in optoelectronics



SEE FAR TO BUILD BETTER

The university campuses take advantage of the city's favourable location to establish **international relations**, one of their key specialities. Open to Northern Europe and the Germanic culture, these sites are now a leading centre for Franco-German education in terms of diversity of options and number of students.

They are also taking part in the construction of the **Université de la Grande Région**, creating future synergies with the universities of Luxembourg, Saarland, Kaiserslautern and Liège. Situated within the Technopôle, **Georgia Tech Lorraine** is testament to the excellent links which unite Metz and the prestigious Georgia Institute of Technology in Atlanta (United States).

To rise to the challenge of intelligence, Metz Métropole relies on its age-old experience in materials and international relations

7. CIRAM is a Franco-German research laboratory
8. A mixture of cultures, like here at ENIM
9. Georgia Tech Lorraine acts as a bridge between the Georgia Institute of Technology in Atlanta (United States) and the campuses in Metz
10. Sports tournament at Supélec
11. Student galas are an opportunity to meet others



Valued heritage of work



A land of opportunity and exchange, a world of experiences in which to rebuild and reinvent oneself... Metz Métropole has always valued work. Because we know that it is first and foremost a long human adventure, replete with opportunity, humility and quality.

.....



1. Peri-urban agriculture plays a leading role in the economy of Metz
2. Rail, road and river transport: Metz Métropole is supplied with a wide variety of communication channels
3. The Airport of Metz-Nancy-Lorraine
4. The TGV connects Metz Métropole to Paris and Frankfurt
5. The rail yard at Woippy is the largest railway freight junction in France
6. The port of Metz is the leading grain port in France
7. The BLIIDA “third-place” renovation project
8. French Tech East, one of the country’s 13 French Tech capitals



SURROUNDED BY MARKETS

With 24 million Europeans within a radius of 200 kilometres, Metz Métropole lies at the heart of a prime residential area and consumer marketplace. The **motorway network** provides access to some of the most active international markets on the continent: Rhine Valley, Île de France, North Sea and Rhone Corridor.

The **TGV** connects the city to Paris in just 1 hour 20 minutes. The **Metz-Nancy-Lorraine Airport** (20 kilometres) is ideal for passengers, whereas Luxembourg Airport (60 kilometres) is one of the largest freight platforms in Europe.

The River Moselle has also seen unprecedented development. Thanks to the new canal connecting it to the River Saône, it will become the main fluvial link between the North Sea and the Mediterranean.

AT THE HEART OF THE RÉGION GRAND EST

In addition to pursuing its goals on the European stage, Metz Métropole is a strong believer in partnerships on the local level. As ambitious as it is attractive, Metz Métropole is heavily involved in **Sillon Lorrain**, France’s first urban cluster. This network brings together the towns and inter-municipal associations of **Metz, Nancy, Thionville** and **Épinal** to work jointly on large-scale structuring projects. Its activities have already been awarded **Capitale French Tech** accreditation, uniting the digital ecosystems of Lorraine and Alsace in **French Tech East**, whose iconic building in Metz is **BLIIDA**, a “third place” for inspiration, innovation and collective intelligence. This promising partnership continues today with the **Région Grand Est**.



1. Muse is the proposed shopping centre in the Quartier de l'Amphithéâtre
2. Maison Heler Metz House by Philippe Starck
3. Wavex actisud: a shopping centre that breaks the mould
4. Christmas markets are second nature to Metz Métropole
5. Aerial view of the Amphithéâtre District
- 6 and 7. Situated between the station and the Centre Pompidou-Metz, the new Centre de Congrès
8. Metz Technopôle is built around new technologies, communication and information
9. A medical centre of excellence based around the new Hôpital de Mercy



COMMERCE AS A VOCATION

In the past, the city stood on a cross-roads of several major Roman roads and medieval trading routes. Metz Métropole now boasts **2,230 retail outlets, 330,000 m² of commercial floor space** and a range of shopping environments. Above all, a new chapter in our business history is being written. On the outskirts of the **Muse**

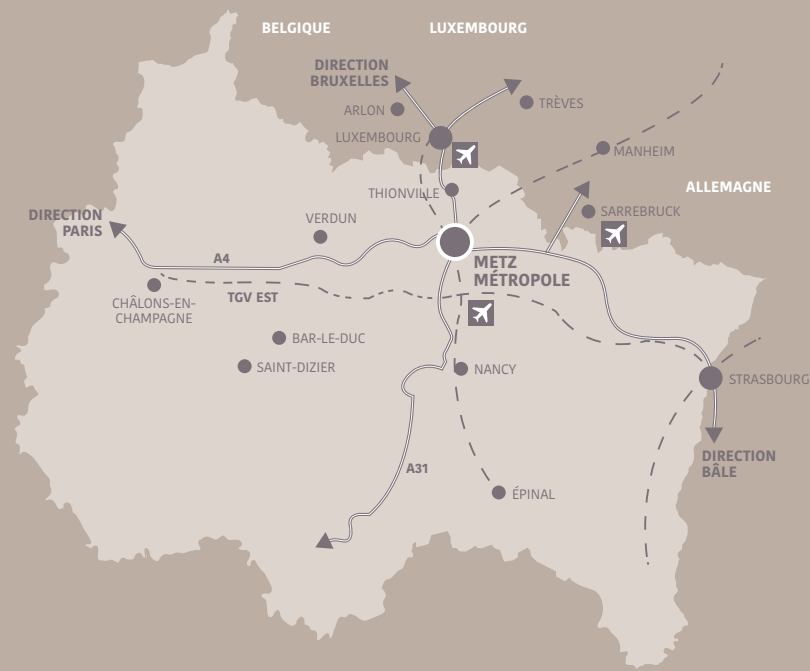
shopping centre, the **Amphithéâtre District** has created a new and lively meeting space to add to the buzz of the pedestrian plateau. And **Waves Actisud** has set out its ambition on the outskirts, turning southern Metz into the second largest commercial zone in France.



ENTREPRENEURIAL SPIRIT

Shaped by an entrepreneurial spirit, Metz Métropole aims to offer investors the very best of the region. First and foremost, the team at **Inspire Metz** development agency offers hands-on support, with top-quality sites close to the motorway network that host a range of interconnected skills: **Frescaty**

Plateau, the **Technopôle** sector dedicated to science and new technology, the **Health Innovation Cluster** based around Mercy Public Hospital, and the **Amphithéâtre District** bordering the Centre Pompidou-Metz with its new Congress Centre.



Our **skills** in an urban area
of **500,000** inhabitants

ECONOMIC AND DIGITAL DEVELOPMENT

TOURISM PROMOTION

HIGHER EDUCATION, RESEARCH AND INNOVATION

CULTURAL AND SPORTING FACILITIES

SPATIAL PLANNING

PREVENTATIVE ARCHEOLOGY

LOCAL HOUSING POLICY

TOWN AND SOLIDARITY POLICY

ARRANFMENTS FOR RECEIVING TRAVELLERS

REGIONAL PLANNING

ENVIRONMENTAL PLANNING

ENERGETIC TRANSITION

WATER RESOURCE MANAGEMENT AND FLOOD PREVENTION

SANITATION

DRINKING WATER

ENERGY

MOBILITY ORGANISATION

ROADS AND PUBLIC SPACES

WASTE MANAGEMENT AND RECYCLING